

Steel Futures

www.scnz.org

Dates to Remember

SCNZ AGM & Members' Meeting

11 August 2005, 2pm
"Raising the Game"
with golf at Wairakei Resort

ACENZ Engineers Conference

11 – 14 August 2005
Grand Tiara Hotel
Rotorua

SCNZ Steel in Architecture Series

August 16 Auckland
August 17 Wellington
August 18 Christchurch

ASI Steel Conference

11 – 13 September 2005
SE Queensland

BCSA Conference & Industry Tour

November 9-16, 2005
London

Steel Construction Certificate: Erection

Tai Poutini Polytech,
12A Bowden Rd,
Mt Wellington,
Auckland
Block Course #2
July 25-29
Block Course #3
September 5-9
Block Course #4
October 17-21

Contact: Clark Hyland
SCNZ Manager
17-19 Gladding Place
Manukau City
Tel: +64-9-262 4842
Fax: +64-9-262 2856
Mobile: 021 348 352

E-mail: clark.hyland@scnz.org



**STEEL CONSTRUCTION
NEW ZEALAND**

Members' Newsletter July 2005 – Number 12

Welcome to The New SCNZ Executive

Congratulations to Jon Gousmett (Steel & Tube, Wellington) and Evan Kroll (Stevensons Structural, Tokomaru) the new members of the SCNZ Executive. They join Grant Bradford (H.J. Asmuss, Auckland), John Frear (Onesteel, Auckland), Greg Jensen (Jensen Steel Fabricators, Tauranga), Mike Klemick (Dimond, Auckland) and Jamie Macredie (Steltech, Auckland) and Wolfgang Scholz (HERA, Auckland). Many thanks to retiring Chairman, Mike Sullivan (D & H Steel Construction, Auckland) and Nick Calavrias (Steel & Tube, Wellington) for their service to SCNZ over the years.

Steel Construction Certificate: Steel Erection

Places are filling well for Block Course #2 (July 25-29) to be held in Auckland at Tai Poutini's new premises at 12A Bowden Road, Mt Wellington. Contact Vaughn Temata on vaughnt@tpp.ac.nz to book in staff for these courses and any other people you would like to register for the certificate programme. Places are still available.

SCNZ AGM & Members' Event: Raising the Game

Remember to get your bookings in for our next Members' Event at which we will also hold our AGM. The date to diarise is August 11 and the venue will be the Wairakei Resort. A 9-hole Golf Tourno with prizes to be won is planned so come along and catch up with the play! There is a ticket fee of \$55 per head to cover green fees and dinner. (Drinks extra). If you want to stay overnight contact Wairakei Resort direct on (07) 374 8021 and say you are with SCNZ. Take the opportunity to invite business associates and prospective SCNZ members to a great event.

Building Act: Construction Delays

The new Building Act is requiring all changes in Consent documentation to be submitted for revised Building Consent before work is commenced on changes. This will have impact on construction programming and may affect LD negotiations. (Refer http://www.chapmantripp.co.nz/resource_library/published_article.asp?id=4155)

SCNZ Sponsorship of the ACENZ Conference

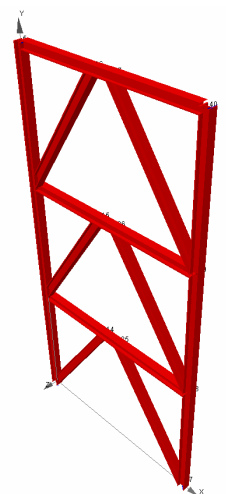
SCNZ is a sponsor of the ACENZ Engineers conference in Rotorua and will have an exhibit promoting what our members can do.

SCNZ Steel in Architecture Series

SCNZ is bringing Russell Lee of Cox Group architects in Australia over for a series of three evening presentations in Auckland, Wellington and Christchurch. Invite your architects to this one and come along to mix and mingle. (Registration \$50+GST contact roy.kane@scnz.org for more information)

IPENZ Structural Engineers : Steel EBF Design

Around 75 structural engineers attended a talk at University of Auckland by SCNZ Manager, Clark Hyland on the design of steel Eccentrically Braced Frames (EBF) on 12th July. The IPENZ organisers commented that this was the best attendance at their meetings for a while. The presentation can be viewed online at www.scnz.org



EBF